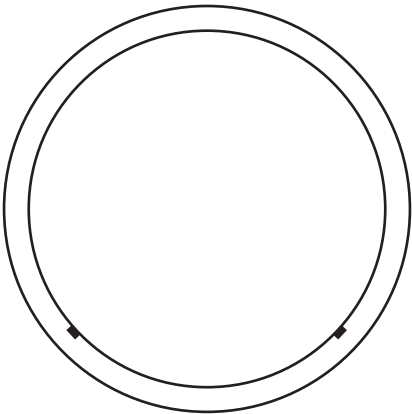


Quick guide



Smoke Alarm

Optical

Jacob Jensen

Read this booklet before using your Smoke Alarm and save it for future reference.

This Jacob Jensen smoke alarm has an optical sensor and is therefore free of radioactive substances. The smoke alarm is intended for private residences.

When the alarm detects smoke, it will emit a piercing sound of a minimum of 85dB at a distance of 3 meters.

Know your Smoke Alarm

4

Using your Smoke Alarm

6

Mounting your Smoke Alarm

8

Full user manual

10

Know your Smoke Alarm

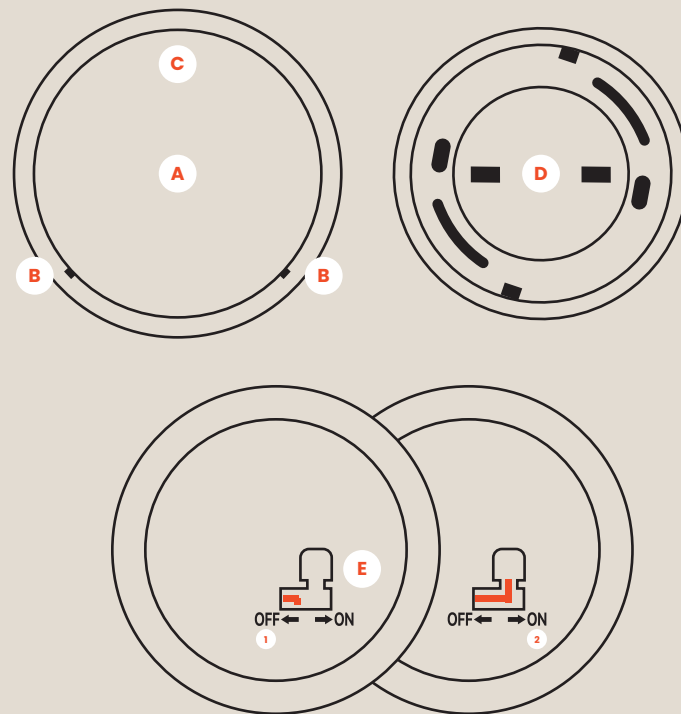
A Test/Reset Button
Use the test button to check if the Smoke Alarm works.

B LED Indicators

C Siren
The siren will be activated when smoke is registered. It will also be activated for testing and when battery needs to be changed.

D Mounting Plate
Use mounting plate to place the Smoke Alarm on the ceiling.

E Activation Pin
To activate your new smoke alarm, move the small red pin from OFF (position 1) to ON (position 2)



Using your Smoke Alarm

How to activate

Move the small red pin from **OFF** to **ON** to activate the Smoke Alarm. Tilt the pin down into the small notch to fix the pin so that it is accessible if you need to turn off the smoke alarm again.

Battery lifetime

The Smoke Alarm has a built-in 3 volt battery. The battery has a lifetime up to 10 years with normal use. Approximately 30 days before the battery dies, the Smoke Alarm will start beeping 3 times every 43. second. This means that it is time to replace your Smoke Alarm. The built in battery cannot be exchanged.

Testing

Test the Smoke Alarm once a week and always after you have been away from your house for a longer period. Check that the red LED flashes approx. every 5 minutes. Press the test button and hold it until the alarm starts. When releasing the button, the alarm can sound for up to 10 seconds.

Reset alarm

To reset the alarm siren if set off, press the test button.

Alarm in memory

The green LED flashes every 43 seconds if there has been an alarm that has not been reset. It will automatically stop flashing after 24 hours.

Remember cleaning

It is recommended that you clean your Smoke Alarm once a month with a vacuum cleaner. Guide the vacuum cleaner across the fabric front and along the bottom edge of the Smoke Alarm. Be careful not to scratch the frame. The Smoke Alarm can also be wiped with a damp cloth.

Exchange/Disposal

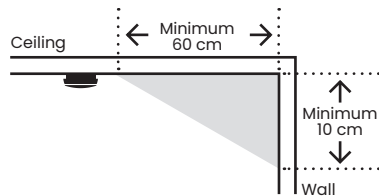
When your Smoke Alarm has expired, hand it in to your local recycling center, where they will properly dispose of it.

Mounting your Smoke Alarm

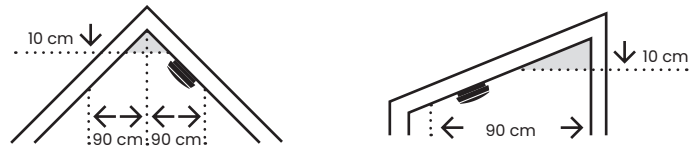
Mounting your Smoke Alarm

Fix the mounting plate to the relevant surface, either with screws or double-sided mounting tape. Use rawplugs if needed for the screws. Note that the Smoke Alarm cannot be mounted on the mounting plate unless the battery is activated and the red pin is in place in the recess. The Smoke Alarm must not be painted over!

The Smoke Alarm must be mounted at least 60 cm from the wall and in such a way that it can be heard from bedrooms and living rooms.

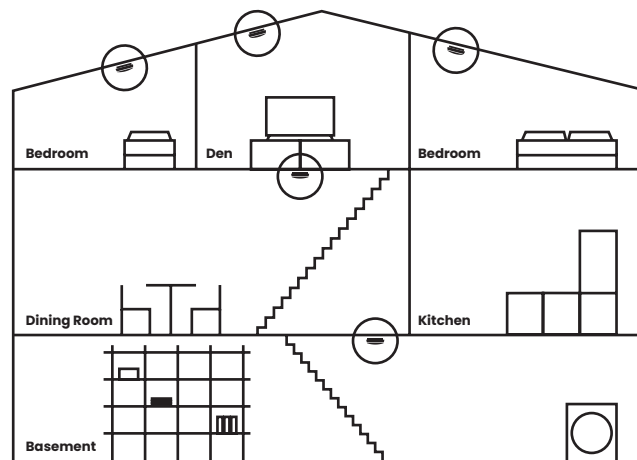


It is not recommended to mount the Smoke Alarm at the top of a pointed ceiling, or in a location in a dead angle, where the smoke will not collect.



Where to place the Smoke Alarm

The Smoke Alarm is placed horizontally on the ceiling. As a minimum, an alarm should be placed between a bedroom and possible sources of fire (kitchen, utility room, fireplace/wood burning stove and garage etc.)



A Smoke Alarm should be placed next to each bedroom and there should not be a distance greater than 10 meters between each Smoke Alarm. Additional security can be achieved by installing Smoke Alarms in all rooms. However, it is not recommended to install Smoke Alarms in kitchens, bathrooms or garages, where steam, smoke and exhaust can trigger the alarm.



For additional product documentation,
please visit jacobjensen.com
Scan the QR code for quick access.

- UK A complete user manual can be found on our website at jacobjensen.com. Scan the QR code for quick access.
- DK En komplet brugermanual kan findes på vores hjemmeside på jacobjensen.com. Scan QR-koden for hurtig adgang.
- SE En komplett användarmanual finns på vår hemsida jacobjensen.com. Skanna QR-koden för snabb åtkomst.
- NO En komplett brukermanual finner du på vår nettside på jacobjensen.com. Skann QR-koden for rask tilgang.
- NL Een volledige gebruikershandleiding kunt u vinden op onze website jacobjensen.com. Scan de QR-code voor snelle toegang.
- FR Un manuel d'utilisation complet est disponible sur notre site Web à l'adresse jacobjensen.com. Scannez le code QR pour un accès rapide.
- DE Eine vollständige Bedienungsanleitung finden Sie auf unserer Website unter jacobjensen.com. Für schnellen Zugriff scannen Sie den QR-Code.



Product by
F&H Group A/S
Gl. Skivevej 70
8800 Viborg
Denmark



EN 14604: 2005/AC: 2008

Jacob Jensen

Version 01.2024